

# AUTISM SOCIETY

OF THE REGIONAL MUNICIPALITY OF WOOD BUFFALO



## SOCIETY NEWS

### Autism Awareness & Acceptance Month

As we make our way through April, we are so happy with the support our community is showing for Autism Awareness & Acceptance month. We kicked off the month with a successful silent auction. Thank you to all the businesses who donated and to The Canadian Brew House for hosting us.

We were so happy to see many of our member families join us for our annual pancake breakfast. Thank you to Earls for your continued support and having us host this event at the restaurant.

Thank you to everyone who came out to celebrate Autism Awareness and Acceptance Day. We had an amazing day, so many enjoyed our sensory room, swimming and bouncy castles. The generosity and support of our community is incredible. A huge thank you to Macdonald Island for all your support during the planning and the day of the event.

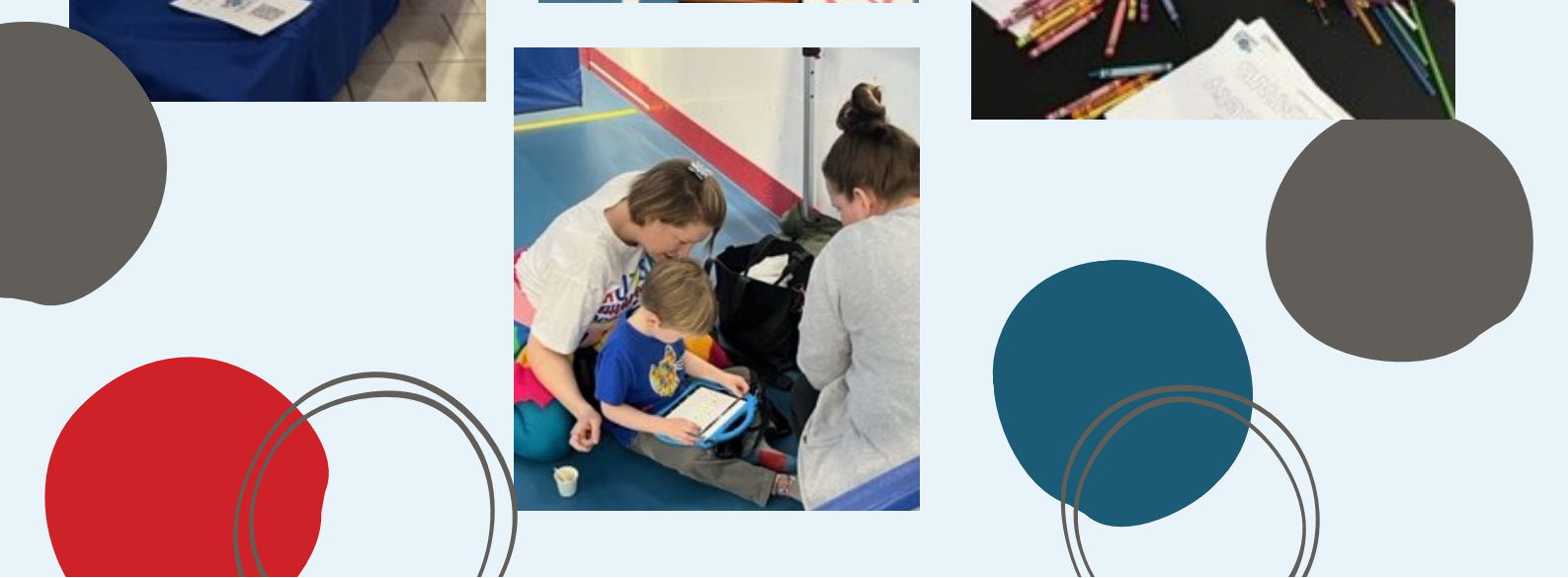
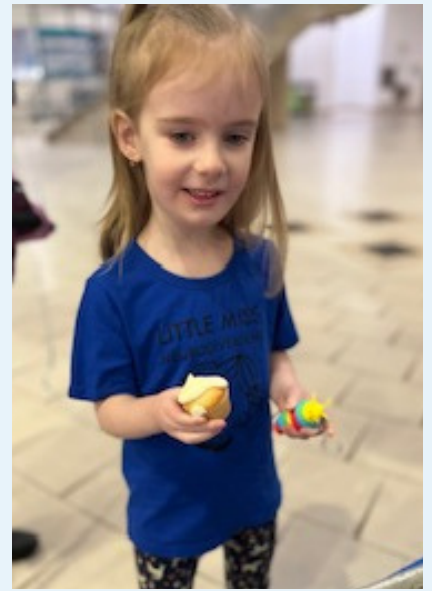
Thank you to schools from the public and catholic boards who have recognized and supported Autism Awareness Day and to those who have supported the sticker campaign in your school. Thank you to the businesses, social profits and individuals who have also supported selling stickers and pins.

The Society still has our sticker campaign going for the month of April, if you would like any stickers, please contact the office.

# Autism Awareness & Acceptance Events









# MEMBER EVENTS

## Member Tubing Event

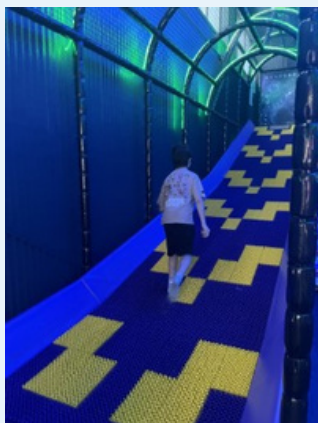
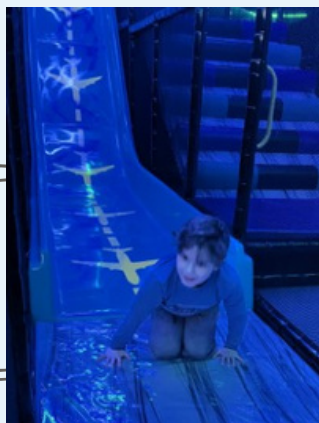
Members got to experience a private tubing event at Vista Ridge and as you can tell by the smiles everyone had a great day.





# Play On Space Member Sensory time

**Thank you to Play On Space for accommodating a sensory friendly play time for our members.**



## MEMBERSHIPS

**For \$40 annually you have the opportunity to get involved, stay connected and help guide the strategic direction of the Autism Society of the RWMB by electing our board-level leadership at the annual general meeting. Join the growing number of families, professionals and community members that make our society.**

### **Why become a member of our Society?**

**Support:** in the form of parent discussion groups, information sessions on various topics, information and advice on working with your child's school or simply a friendly ear on the end of a phone.

**Voting rights:** when you purchase a paid membership and agree to the Society's Approved Bylaws 2020, Guiding Principles, Vision and Mission.

**Advocate:** be a voice for our autism community. Help us to raise awareness and supports for people with special needs in our region.

**Opportunity:** to be involved with committees, events and activities to work towards an inclusive community.

### **Benefits to becoming a member:**

10% off sensory store items

Access to newsletters and information about the society

Unlimited access to our lending library

Early registration for programming and special events

Member rates for workshops, seminars, and conferences

Discounts with community partners

Current community partners- Earls, Color Me Mine, Colossal Toys, Vista Ridge

Voting rights at our Annual General Meeting and special resolution meetings

Non-Voting Rights for professional Membership

**To become a member follow the following link**

**Membership – Autism RMWB**

**Or contact the office**





**Thank you to Cutie & Co. a local small business who did a fundraiser selling earrings. She was able to raise \$510.00 for the society.**



## Call For Camp Kids First Sponsorships

Summer camp is just around the corner and planning has begun. If you're interested in sponsoring this year, please reach out to

Paula- Program Director 780-531-5777

Email: [programdirector@autismrmwb.org](mailto:programdirector@autismrmwb.org)

**AUTISM SOCIETY OF THE REGIONAL MUNICIPALITY OF WOOD BUFFALO**  
21B-10019 MACDONALD AVENUE, FORT McMURRAY, AB. T9H 1S9



January 2023

We are writing to you as a supporter of social non-profit community groups to ask for assistance for this year's summer camp for children with special needs in our community. This annual summer day camp will give children and youth aged 4-17 years-old with autism and other special needs the opportunity to experience typical summer camp experiences like their peers do. We offer experiences such as swimming, rock-climbing, music and dance classes, boat trip on Athabasca river, arts & crafts, visits to Heritage Park & Oilsands Discovery Centre, day trip to Gregoire Lake beach area, etc.

The camp is financially supported in part by Family Supports for Children with Disabilities (FSCD), Government of Alberta, which covers a portion of the cost of hiring one-to-one support workers for children with complex needs, but all other costs are covered by parent fees and fundraising. We are planning to raise an estimated \$13,500.00 for uncovered costs, estimated cost for fundraising is \$1,000.00 for this campaign.

We would greatly appreciate your sponsorship of next summer's Camp Kids First. In sponsoring the camp, you will be assisting the payment of a child attending camp, the cost of covering a field trip, or the cost of a professional attending camp to teach a workshop (dance, yoga, art etc.). We can provide recognition of your name and/or institutional affiliation on our camp t-shirts (worn by all staff and youth attending), on social media and all promotional materials through one of the following levels:

1. **Gold Level (\$999 +)**
  - a. Assists us pay for Camp t-shirts (bright colours for safety purposes) (60 children + 60 staff = \$3500)
  - b. Helps pay for our seasonal storage locker to keep our Camp equipment safe (\$1800)
  - c. Provides staff training in Nonviolent Crisis Intervention (6 staff = \$1200)
  - d. Assists us pay facility rental and utilities (1 week = \$800/\$1000)
2. **Silver Level (\$500 to \$999)**
  - a. Covers the cost of a one-to-one support worker for a child with complex or high medical needs (\$780)
  - b. Pays for 10 children to experience a River Boat Tour of the Clearwater River (\$800)
  - c. Covers entrance fees to one local attraction (Heritage Park, Oilsands Discovery Centre, etc.) for ten children (60 children = \$700/\$900)
3. **Bronze Level (\$20 to \$499)**
  - a. Sponsor's one child's camp fees for a week at Camp Kids First (1 child = \$200)
  - b. Pays for a yoga instructor/music teacher/dance instructor session (10 kids = \$200)
  - c. Assists us to pay for camp materials such as craft supplies, baking ingredients, sensory toys, etc.

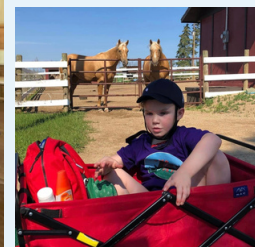
To serve as a sponsor for the 2022 Camp Kids First, you can...

- Mail us a cheque to 21B-10019 Macdonald Avenue, Ft McMurray, AB. T9H 1S9. Please make your cheque payable to: Autism Society of the Regional Municipality of Wood Buffalo
- EMT us at [autismsupport@autismrmwb.org](mailto:autismsupport@autismrmwb.org)
- Donate through our website: <https://autismrmwb.org/donate/>

Please email or call me directly if you have any questions and thank you very much for your support! Tax receipts are available for all donations over \$20.

Paula Bowen  
Program Director - Autism Society of the RMWB  
[programdirector@autismrmwb.org](mailto:programdirector@autismrmwb.org)  
780-531-5777

Alberta Incorporated 2017, Registered Charity #707604492RR0001





# APRIL EVENTS

## Sticker Campaign



If you would like to buy stickers and or pins to support the Autism Society of the RMWB and enrich our community with inclusion, acceptance, and awareness, follow the link.

If you would like more information on how your business, office or school can help sell stickers, please reach out to Danielle- Community Development Officer. Phone: 587-452-9334 Email: [community@autismrmwb.org](mailto:community@autismrmwb.org)

**Autism Society of the RMWB - Sensory Store**  
**([wildapricot.org](http://wildapricot.org))**

Autism Society of the RMWB Hosts  
"How To Make Sense Of Challenging Behavior"  
Presented By: Shane L. Lynch, PhD  
Tickets Available Through Eventbrite

## BEHAVIOUR

**Presentation**  
Friday, April 21, 2023  
6:00-7:30 PM

In this presentation, participants will be given the tools to understand why challenging behavior is used and some key strategies to replace that behavior with more positive and adaptive alternatives. This introduction to understanding behavior will be helpful to parents, educators, and anyone who supports individuals with diverse learning needs.

**Workshop**  
Saturday, April 22, 2023, 9:00 AM-3:00 PM  
Lunch Break 12:00-1:00

Full-day workshop will take a deeper dive into the reasons why people use challenging behavior. Participants will learn how to determine the function of challenging behavior, how to identify alternative skills that need to be taught to improve a child's independence and discuss strategies for setting environments that promote everyone's success. This workshop will be helpful to educators, parents, and anyone who supports individuals with diverse learning needs.

**Presentation**  
Friday, April 21, 2023



For more information, please contact  
Danielle, Community Development Officer  
Email: [community@autismrmwb.org](mailto:community@autismrmwb.org)  
Phone: 587-452-9334

**Workshop**  
Saturday, April 22, 2023



## Guest Speaker:

SHANE L. LYNCH, PHD

Registered Psychologist, Director Positive Behavior Support, Inc.



Shane L. Lynch, PhD  
Pronouns: He/Him  
Registered Psychologist, Director  
Positive Behavior Support, Inc.  
4910 20A Street, SW.  
Calgary AB, T2T 5A6  
P. 403.400.7968  
[shanelynch@positivebehaviorsupport.ca](mailto:shanelynch@positivebehaviorsupport.ca)

### Bio:

Shane is a Registered Psychologist and the Founder and Director of Positive Behavior Support, Inc. a psychology practice that aims to support individuals, families, and organizations in building the skills needed to better support those with diverse learning needs. With a doctorate in educational psychology, he has specialized in the areas of autism, and developmental and behavior disorders in children, youth, and adults. He has consulted to organizations and schools across Alberta, the Yukon, and the Northwest Territories. Shane has been fortunate to be able to teach university courses, publish in scientific journals, present at international conferences, lead an Alberta-wide Severe and Complex Behavior Community of Practice, and participate in a wide variety of working groups supporting autism and mental health resources. Shane is also the Director of Innovation at the Sinneave Family Foundation focusing helping autistic individuals live, learn, work, and thrive in their communities. When not working, Shane can usually be found on two wheels or playing in the mountains.

**To purchase a ticket please click link**

**<https://www.eventbrite.ca/e/how-to-make-sense-of-challenging-behavior-presentation-by-shane-lynch-phd-tickets-549559426037>**

**<https://www.eventbrite.ca/e/how-to-make-sense-of-challenging-behavior-workshop-by-shane-lynch-phd-tickets-549581391737>**



# YMM Airport Easter Egg Hunt



The society was happy to help be a part of the YMM Airport Easter egg hunt during their sensory friendly hour. We are grateful that the community is supporting and fostering inclusive events.

## Kidsport Wood Buffalo

Kidsport is looking for youth and adults of all ages to Walk the Ramp for our cosplay show.

Get your best costume out or better still create a new one and Walk the Ramp to support our show. Tickets to the event are applied. Early bird tickets are only \$10 ea for 13 and up. Kids enter for free.

Cosplay show participants need to buy an event ticket. There's no cost to enter the cosplay show.

We can't wait to see your costumes.

More details to sign up here:

The Fam Expo- a family friendly mini-comicon - Wood Buffalo  
(kidsportcanada.ca)





# FUNDRAISERS & EVENTS

IT'S TIME TO  
**TRAVEL**

**WESTJET**

WIN A ROUNDTRIP FLIGHT FOR TWO GUESTS TO ANY  
REGULARLY SCHEDULED AND MARKETED WESTJET  
DESTINATION  
(NO CASH VALUE. FEES, TAXES, SURCHARGES NOT INCLUDED. BLACKOUT  
DATES AND RESTRICTIONS APPLY.)

TICKET SALES END: APRIL 30TH, 2023  
DRAW DATE: MAY 1ST, 2023  
DRAW LOCATION: AUTISM SOCIETY OF THE RMWB  
AGLC#634505  
PLAYERS MUST RESIDE IN ALBERTA, 18 YEARS OR OLDER  
THE DRAW AND WINNING TICKET INFO WILL BE POSTED ON OUR FACEBOOK PAGE.  
THE WINNER WILL BE CONTACTED TO CLAIM THEIR PRIZE PAYOUT.  
THANK YOU FOR HELPING US SUPPORT THE COMMUNITY  
AND GOOD LUCK!



Autism Society of the RMWB  
April 50/50 Fundraiser



The winner will receive 50% of ticket sales (whichever is greater)  
up to a maximum of \$10,000.  
Ticket Sales End: April 30th, 2023  
Draw Date: May 1st, 2023  
Draw Location: Autism Society of the RMWB  
AGLC#632098

Players must reside in Alberta, 18 years or older  
The draw and winning ticket info will be posted on our Facebook page.  
The winner will be contacted to claim their prize payout.

Thank you for helping us support the community  
and good luck!

Click poster to purchase tickets

**BINGO**  
FORT MCMURRAY ROYAL  
CANADIAN LEGION

For the whole month of April, Fort McMurray Royal Canadian Legion will be donating proceeds to the Autism Society. Come out and enjoy playing some bingo and give yourself a shot at winning the Loonie Pot, Toonie Pot or the \$5000 Bonanza!!!! Games are every Sunday doors open at 12 noon!

EVERY SUNDAY IN APRIL, 2023  
AT 12PM TO 3:30PM  
9317 HUGGARD STREET, FORT MCMURRAY, AB.



Autism Society of the RMWB  
*Flower Fundraiser*



Click Poster to order



[Click poster to registration link](#)

## VOLUNTEER OPPORTUNITIES



[Autism Society of the RMWB Casino](#)  
 [\(signupgenius.com\)](https://signupgenius.com)



[Bingo April 2023/](#)  
[Wood Buffalo Volunteers](#)

[Wood Buffalo Volunteers](#)





Camp Kids First  
([signupgenious.com](https://signupgenious.com))

Camp Kids First  
(Wood Buffalo Volunteers)  
Pickup

Camp Kids First  
(Wood Buffalo Volunteers)  
Unloader



Autism Society: Santa Fun Run  
([signupgenious.com](https://signupgenious.com))



Wood Buffalo volunteers

Sign up genius

# UPCOMING SESSIONS



**Neurodiverse**

**ADULT SOCIAL GROUP**

Social program for 16 years plus. The program focuses on building and maintaining friendship skills in group activities.

**TUESDAYS**  
12:00-2:00 PM

LOWER LEVEL OF THE LOCAL 707A UNIFOR BUILDING  
21B-10019 MACDONALD AVE.  
FORT MCMURRAY, AB  
T9H 1S9

PHONE: 587-452-9334  
EMAIL: COMMUNITY@AUTISMRMWB.ORG  
WEBSITE: WWW.AUTISMRMWB.ORG

AUTISM SOCIETY OF THE REGIONAL MUNICIPALITY OF WOOD BUFFALO

**Neurodiverse Social Group is a Social Program for 16 years plus. The Program focuses on building and maintaining friendship skills in group activities.**

**Activities included:**

- Pizza Party with crafts & games
- Wood Buffalo Regional Library.
- Bowling at The Alley YMM
- Sensory Friendly Movie
- Games and activities night
- Sensory time

**For any questions please contact 587-452-9334 or email [community@autismrmwb.org](mailto:community@autismrmwb.org)**

## Employment Support



**MAS** METICULON ASSESSMENT SERVICE

**DO YOU WANT TO...**

Support for neurodiverse individuals & people living with all types of disabilities

RECEIVE NO COST DIGITAL LITERACY TRAINING

DEVELOP YOUR GOALS

CREATE STRUCTURE AND BUILD HEALTHY HABITS

CONTRIBUTE TO YOUR COMMUNITY

STRENGTHEN YOUR COMMUNICATION SKILLS

BUILD CONFIDENCE

RECEIVE PERSONALIZED COACHING

ACCESS EMPLOYMENT, VOLUNTEER, AND/OR MENTORSHIP OPPORTUNITIES

**CONTACT US**  
AUTISM SOCIETY OF THE RMWB  
Email: [employment@autismrmwb.org](mailto:employment@autismrmwb.org)  
Phone: 780-215-7280  
Website: [www.autismrmwb.org](http://www.autismrmwb.org)

**FUNDED BY**  
Government of Alberta  
Government of Canada  
CASE (Canadian Association for Supported Employment)  
Sinnave Family Foundation



**DO YOU...**

- Identify as neurodiverse or as a person living with a disability?
- Have the skills but struggle to move beyond the first interview?
- Want support to achieve your career goals?

To learn more about how we can assess your employability skills and create a customized solution just for you, contact us at:

**AUTISM SOCIETY OF THE RMWB**  
Phone: 780-215-7280  
Email: [employment@autismrmwb.org](mailto:employment@autismrmwb.org)  
Website: [www.autismrmwb.org](http://www.autismrmwb.org)

**FUNDED BY:**  
MAS METICULON ASSESSMENT SERVICE  
Sinnave Family Foundation  
Alberta Government  
Canada  
The Canadian Association for Supported Employment (CASE)

**Identify as neurodiverse, or as a person living with a disability?**

**Want to achieve your career goals?**

**Please reach out to Jibran Hamayun our Employment Supports Program Facilitator to find out more information for our next session.**

**Email: [employment@autismrmwb.org](mailto:employment@autismrmwb.org)**

**Phone: 780-215-7280**



# Independent Living Skills

Ages 18-29yrs

- ✓ Health & Self-Care
- ✓ Personal Finance
- ✓ Household Management
- ✓ Relationships
- ✓ Community & Leisure



Apply:



An opportunity for neurodiverse young adults to learn critical life skills to promote independent living.



MORE INFO:  
[lifeskills@autismrmwb.org](mailto:lifeskills@autismrmwb.org)



## ADULT LIFE SKILLS PROGRAM

Our LifeSkills Program is open to any neurodiverse individuals and persons living with disabilities from the ages of 12-30 to learn critical life skills and to promote independent living.

For more information please contact:

**Leslie Rae Samson LifeSkills**

**Leader Email:**

[lifeskills@autismrmwb.org](mailto:lifeskills@autismrmwb.org)

**Phone: 587-452-9334**

## FRIDAY FRIENDS

Social Skills and Friendship Group



### THE PROGRAM

A 6 week facilitator led program, (based on PEERS) for youth aged 10-14yrs. Fridays 5-7pm, starting October 28th. Youth will learn and practice skills during sessions and practice at home with parents/family members. ATTENDANCE IS REQUIRED AT EACH SESSION. ELIGIBILITY IS DETERMINED THROUGH TELEPHONE INTERVIEW WITH FACILITATOR.

### PROGRAM FOR THE EDUCATION AND ENRICHMENT OF RELATIONSHIP SKILLS (PEERS)

An evidence-based social skills training intervention for youth with ASD, ADHD, FASD, Anxiety, Depression and/or other socio-emotional challenges. PEERS is designed for motivated youth to learn how to make and keep friends. Skills taught include: use of appropriate conversational skills, appropriate use of humour, how to enter and exit conversation, how to handle arguments and disagreements, rumours and gossip, and how to handle rejection, teasing and bullying.

TO REGISTER, EMAIL  
[programdirector@autismrmwb.org](mailto:programdirector@autismrmwb.org)

# EDUCATION INCLUSION PROGRAM

We have been able to continue the delivery of this program through funding provided by the Community Initiative Grant from the Regional Municipality of Wood Buffalo.

*Thank You*

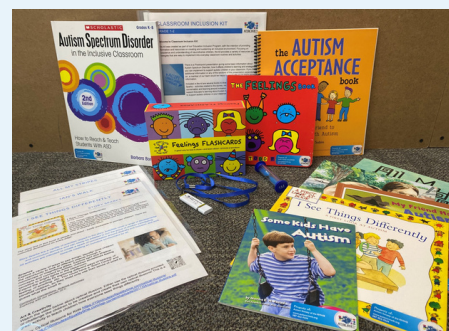
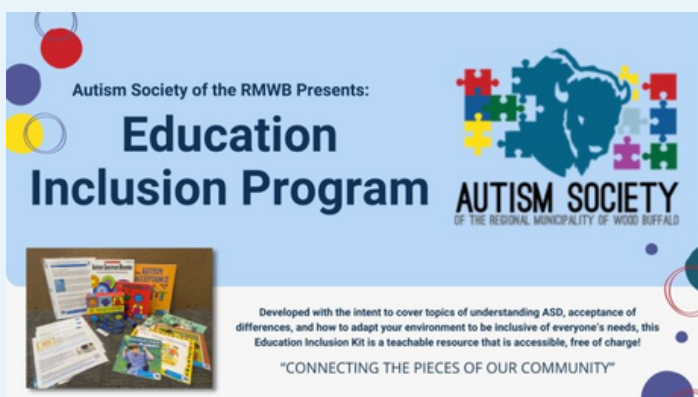


## THE EDUCATION INCLUSION PROGRAM

The Education Inclusion Program, was created by the society as a lending resource that is accessible to and free of charge. It was developed with the intention of promoting and educating others about Autism Spectrum Disorder. With a focus on acceptance and understanding, it covers topics of understanding ASD, acceptance of differences, and how to adapt your environment to be inclusive of everyone's needs. Since its conception it has grown to a library of presentations that cover a range of topics for almost any organization, service provider, business, employer and family wishing to learn more about ASD acceptance and accommodations.

Our school lending bins have been created for an intended audience of early entry to grade 6. Educators can request to borrow a bin for their class. Included in the bin is a collection of books, interactive material and an informative slideshow. We

have ensured that the bins have curriculum related material that could be substituted for items in health or language arts. Reading comprehension activities, novel study material and critical thinking activities are just some of what you will find in this resource. We have also ensured to add Leader in Me language to slideshow content. It really is a "win, win". An extensive teacher recourse guide has been created for each bin and offers ideas for activities and group projects. A teacher could use as little or as much of this program as they like. The resource can be borrowed from the society office with training provided if required or requested. A presentation to the intended audience is available by our Community Development Officer as well.



Please follow the link below to request a kit:  
**[Education Inclusion Kit Request \(office.com\)](https://www.office.com)**



# NOW HIRING SOCIAL-RESPITE SUPPORT WORKERS



We are looking for motivated, caring, enthusiastic, supportive and professional members to join our team. Knowledge and previous experience supporting individuals with disabilities is essential.

**Flexible hours  
part time/casual**

**Email Resume to:**

[programdirector@autismrmwb.org](mailto:programdirector@autismrmwb.org)

## CONTACT US



Lower level of the Local 707A UNIFOR Building  
21B-10019 MacDonald Ave,  
Fort McMurray, AB  
T9H 1S9



Phone: 587-452-9334



Email: [community@autismrmwb.org](mailto:community@autismrmwb.org)



Website: [www.autismrmwb.org](http://www.autismrmwb.org)

## *Vision*

A Region where autistic Individuals and all those living with a disability, are valued and are participating members of the community. A region that recognizes that all citizens have the right to live, work and play.

## *Mission*

We are committed to creating an inclusive community through programming, supports, and understanding for autistic individuals in our region, and all those living with a disability and their families across the lifespan.