

AUTISM SOCIETY

OF THE REGIONAL MUNICIPALITY OF WOOD BUFFALO



SOCIETY NEWS

April is Autism Awareness and Acceptance month. Autism Acceptance Month emphasizes the need for public awareness to promote acceptance, celebrate the differences, and be more inclusive towards autistic individuals around us.

Check out our Fundraiser and events page for more information on our awareness and acceptance events and ways you can support your local Autism Society.



The Autism Society has been working hard on planning our upcoming events. Thank you to the families who joined us for our member sensory friendly movie night, as well as sensory friendly time at Play on Space. If you would like to become a member, please see Member information on page 3.

COMMUNITY ENGAGEMENTS & EVENTS

Adult Social group

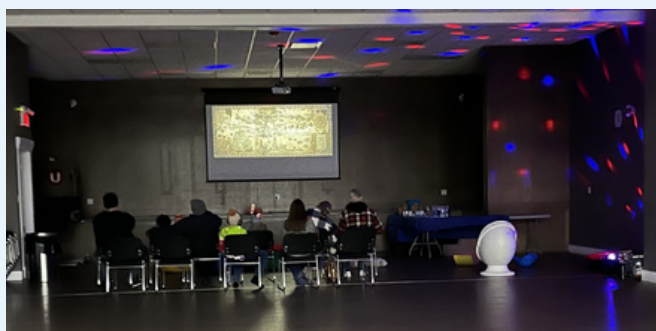
The adult social group enjoyed visiting the new Kiyam Community Park, games at MacDonald Island, and cupcake decorating from Sobey's Thickwood and heart shape pizza from Boston Pizza on Valentines Day.

The group meets Tuesdays from 12:00-2:00



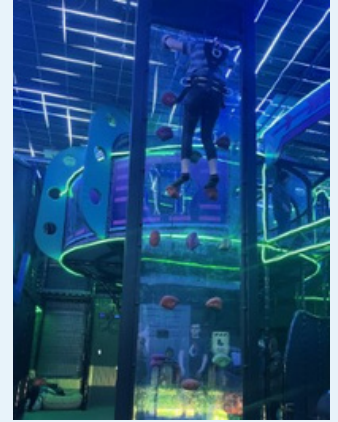
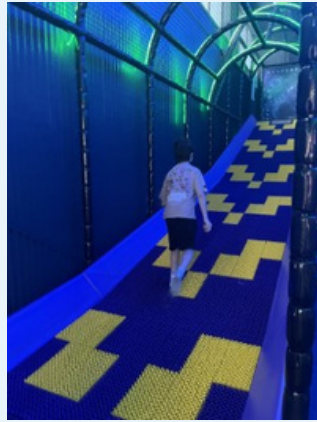
Member Movie Night

Members really enjoyed the Family Movie night. Check out some of our other member events and watch for more movie nights in the future.



Play On Space Member Sensory time

Thank you to Play On Space for accommodating a sensory friendly play time for our members.



MEMBERSHIPS

For \$20 annually you have the opportunity to get involved, stay connected and help guide the strategic direction of the Autism Society of the RWMB by electing our board-level leadership at the annual general meeting. Join the growing number of families, professionals and community members that make our society.

Why become a member of our Society?

Support: in the form of parent discussion groups, information sessions on various topics, information and advice on working with your child's school or simply a friendly ear on the end of a phone.

Voting rights: when you purchase a paid membership and agree to the Society's Approved Bylaws 2020, Guiding Principles, Vision and Mission.

Advocate: be a voice for our autism community. Help us to raise awareness and supports for people with special needs in our region.

Opportunity: to be involved with committees, events and activities to work towards an inclusive community.

Benefits to becoming a member:

- 10% off sensory store items

- Access to newsletters and information about the society

- Unlimited access to our lending library

- Early registration for programming and special events

- Member rates for workshops, seminars, and conferences

- Discounts with community partners

Current community partners- Earls, Color Me Mine, Colossal Toys, Vista Ridge

- Voting rights at our Annual General Meeting and special resolution meetings

- Non-Voting Rights for professional Membership

To become a member follow the following link

Membership – Autism RMWB

Or contact the office



Thank you to those that have donated items to our silent auction happening March 24th.

If you would like to donate, please email community@autismrmwb.org

Call For Camp Kids First Sponsorships

Summer camp is just around the corner and planning has begun. If you're interested in sponsoring this year, please reach out to

Paula- Program Director 780-531-5777

Email: programdirector@autismrmwb.org

AUTISM SOCIETY OF THE REGIONAL MUNICIPALITY OF WOOD BUFFALO
21B-10019 MACDONALD AVENUE, FORT McMURRAY, AB. T9H 1S9



January 2023

We are writing to you as a supporter of social non-profit community groups to ask for assistance for this year's summer camp for children with special needs in our community. This annual summer day camp will give children and youth aged 4-17 years-old with autism and other special needs the opportunity to experience typical summer camp experiences like their peers do. We offer experiences such as swimming, rock-climbing, music and dance classes, boat trip on Athabasca river, arts & crafts, visits to Heritage Park & Oilsands Discovery Centre, day trip to Gregoire Lake beach area, etc.

The camp is financially supported in part by Family Supports for Children with Disabilities (FSCD), Government of Alberta, which covers a portion of the cost of hiring one-to-one support workers for children with complex needs, but all other costs are covered by parent fees and fundraising. We are planning to raise an estimated \$13,500.00 for uncovered costs, estimated cost for fundraising is \$1,000.00 for this campaign.

We would greatly appreciate your sponsorship of next summer's Camp Kids First. In sponsoring the camp, you will be assisting the payment of a child attending camp, the cost of covering a field trip, or the cost of a professional attending camp to teach a workshop (dance, yoga, art etc.). We can provide recognition of your name and/or institutional affiliation on our camp t-shirts (worn by all staff and youth attending), on social media and all promotional materials through one of the following levels:

1. **Gold Level (\$999 +)**
 - a. Assists us pay for Camp t-shirts (bright colours for safety purposes) (60 children + 60 staff = \$3500)
 - b. Helps pay for our seasonal storage locker to keep our Camp equipment safe (\$1800)
 - c. Provides staff training in Nonviolent Crisis Intervention (6 staff = \$1200)
 - d. Assists us pay facility rental and utilities (1 week = \$800/\$1000)
2. **Silver Level (\$500 to \$999)**
 - a. Covers the cost of a one-to-one support worker for a child with complex or high medical needs (\$780)
 - b. Pays for 10 children to experience a River Boat Tour of the Clearwater River (\$800)
 - c. Covers entrance fees to one local attraction (Heritage Park, Oilsands Discovery Centre, etc.) for ten children (60 children = \$700/\$900)
3. **Bronze Level (\$20 to \$499)**
 - a. Sponsor's one child's camp fees for a week at Camp Kids First (1 child = \$200)
 - b. Pays for a yoga instructor/music teacher/dance instructor session (10 kids = \$200)
 - c. Assists us to pay for camp materials such as craft supplies, baking ingredients, sensory toys, etc.

To serve as a sponsor for the 2022 Camp Kids First, you can...

- Mail us a cheque to 21B-10019 Macdonald Avenue, Ft McMurray, AB. T9H 1S9. Please make your cheque payable to: Autism Society of the Regional Municipality of Wood Buffalo
- EMT us at autismsupport@autismrmwb.org
- Donate through our website: <https://autismrmwb.org/donate/>

Please email or call me directly if you have any questions and thank you very much for your support! Tax receipts are available for all donations over \$20.

Paula Bowen
Program Director - Autism Society of the RMWB
programdirector@autismrmwb.org
780-531-5777

Alberta Incorporated 2017, Registered Charity #707604492RR0001



APRIL EVENTS



To Volunteer please follow the link:

[Volunteer Wood Buffalo](#)



To Volunteer please follow the link:

[Volunteer Wood Buffalo](#)

Sticker Campaign



If you would like to buy stickers and or pins to support the Autism Society of the RMWB and enrich our community with inclusion, acceptance, and awareness, follow the link.

If you would like more information on how your business, office or school can help sell stickers, please reach out to Danielle-Community Development Officer. Phone: 587-452-9334 Email: community@autismrmwb.org

[Autism Society of the RMWB - Sensory Store \(wildapricot.org\)](#)

Autism Society of the RMWB Hosts
"How To Make Sense Of Challenging Behavior"
Presented By: Shane L. Lynch, PhD
Tickets Available Through Eventbrite

BEHAVIOUR

Presentation
Friday, April 21, 2023
6:00-7:30 PM

In this presentation, participants will be given the tools to understand why challenging behavior is used and some key strategies to replace that behavior with more positive and adaptive alternatives. This introduction to understanding behavior will be helpful to parents, educators, and anyone who supports individuals with diverse learning needs.

Workshop
Saturday, April 22, 2023, 9:00 AM-3:00 PM
Lunch Break 12:00-1:00

Full-day workshop will take a deeper dive into the reasons why people use challenging behavior. Participants will learn how to determine the function of challenging behavior, how to identify alternative skills that need to be taught to improve a child's independence and discuss strategies for setting environments that promote everyone's success. This workshop will be helpful to educators, parents, and anyone who supports individuals with diverse learning needs.

Presentation
Friday, April 21, 2023



For more information, please contact
Danielle, Community Development Officer
Email: community@autismrmwb.org
Phone: 587-452-9334

Workshop
Saturday, April 22, 2023



How To Make Sense of Challenging Behavior- Presentation by Shane Lynch, PhD
Introduction to understanding challenging behavior and how to make sense of it.



How To Make Sense of Challenging Behavior- Workshop by Shane Lynch, PhD
Understanding challenging behavior and how to make sense of it.

Guest Speaker:

SHANE L. LYNCH, PHD

Registered Psychologist, Director Positive Behavior Support, Inc.



Shane L. Lynch, PhD
Pronouns: He/Him
Registered Psychologist, Director
Positive Behavior Support, Inc.
4910 20A Street, SW.
Calgary AB, T2T 5A6
P. 403.400.7968
shanelynch@positivebehaviorsupport.ca

Bio:

Shane is a Registered Psychologist and the Founder and Director of Positive Behavior Support, Inc. a psychology practice that aims to support individuals, families, and organizations in building the skills needed to better support those with diverse learning needs. With a doctorate in educational psychology, he has specialized in the areas of autism, and developmental and behavior disorders in children, youth, and adults. He has consulted to organizations and schools across Alberta, the Yukon, and the Northwest Territories. Shane has been fortunate to be able to teach university courses, publish in scientific journals, present at international conferences, lead an Alberta-wide Severe and Complex Behavior Community of Practice, and participate in a wide variety of working groups supporting autism and mental health resources. Shane is also the Director of Innovation at the Sinneave Family Foundation focusing helping autistic individuals live, learn, work, and thrive in their communities. When not working, Shane can usually be found on two wheels or playing in the mountains.

UPCOMING FUNDRAISERS & EVENTS



Click poster to registration link



Tickets available on Eventbrite

DR. LONNIE ZWAIGENBAUM SPECIALIZES IN EARLY DEVELOPMENT IN AUTISM AND RELATED NEURODEVELOPMENTAL DISORDERS. HE IS THE CO-DIRECTOR OF THE AUTISM RESEARCH CENTRE BASED AT THE GLENROSE REHABILITATION HOSPITAL, AND WILL MAKING REGULAR TRIPS TO THE RMWB FOR ASSESSMENTS. HE WOULD LIKE TO INTRODUCE HIMSELF AND MEET PARENTS, CAREGIVERS AND PROFESSIONALS OF OUR COMMUNITY AND GET TO KNOW US. PLEASE COME DOWN ON MARCH 14TH, 7:30PM TO 9:00PM.

MEMBER EVENTS

MEMBER TUBING EVENT



Sunday March 26th 3:30-5:30 PM

Please arrive by 3:00 pm for registration and transportation down to the tubing park.

\$15.00 per person over the age of 3yrs-old

LIMITED REGISTRATION

This is a family event, parents/caregivers must attend with children.

For any questions please contact:
Danielle- Community Development Officer
Phone: 587-452-9334
Email: community@autismrmwb.org



To sign up to be a member of the society please click [here](https://autismrmwb.org/become-a-member).
Membership – Autism Society of the RMWB
(autismrmwb.org)

VOLUNTEER OPPORTUNITIES



[Bingo April 2023/](#)
[Wood Buffalo Volunteers](#)



Autism Society of the Regional Municipality of Wood Buffalo: July 20th and 21st Casino
(signupgenius.com)



UPCOMING SESSIONS



Neurodiverse

ADULT SOCIAL GROUP

Social program for 16 years plus. The program focuses on building and maintaining friendship skills in group activities.

TUESDAYS
12:00-2:00 PM

LOWER LEVEL OF THE LOCAL 707A UNIFOR BUILDING
21B-10019 MACDONALD AVE.
FORT MCMURRAY, AB
T9H 1S9

PHONE: 587-452-9334
EMAIL: COMMUNITY@AUTISMRMWB.ORG
WEBSITE: WWW.AUTISMRMWB.ORG

AUTISM SOCIETY OF THE REGIONAL MUNICIPALITY OF WOOD BUFFALO

Neurodiverse Social Group is a Social Program for 16 years plus. The Program focuses on building and maintaining friendship skills in group activities.

Activities included:

- Pizza Party with crafts & games
- Wood Buffalo Regional Library.
- Bowling at The Alley YMM
- Sensory Friendly Movie
- Games and activities night
- Sensory time

For any questions please contact 587-452-9334 or email community@autismrmwb.org

Employment Support



MAS METICOLON ASSESSMENT SERVICE

DO YOU WANT TO...

Support for neurodiverse individuals & people living with all types of disabilities

RECEIVE NO COST DIGITAL LITERACY TRAINING

DEVELOP YOUR GOALS

CREATE STRUCTURE AND BUILD HEALTHY HABITS

CONTRIBUTE TO YOUR COMMUNITY

STRENGTHEN YOUR COMMUNICATION SKILLS

BUILD CONFIDENCE

RECEIVE PERSONALIZED COACHING

ACCESS EMPLOYMENT, VOLUNTEER, AND/OR MENTORSHIP OPPORTUNITIES

CONTACT US
AUTISM SOCIETY OF THE RMWB
Email: employment@autismrmwb.org
Phone: 780-215-7280
Website: www.autismrmwb.org

FUNDED BY
Government of Alberta
Government of Canada
CASE (Canadian Association for Supported Employment)
Sinneave Family Foundation



DO YOU...

- Identify as neurodiverse or as a person living with a disability?
- Have the skills but struggle to move beyond the first interview?
- Want support to achieve your career goals?

To learn more about how we can assess your employability skills and create a customized solution just for you, contact us at:

AUTISM SOCIETY OF THE RMWB
Phone: 780-215-7280
Email: employment@autismrmwb.org
Website: www.autismrmwb.org

FUNDED BY:
MAS METICOLON ASSESSMENT SERVICE
Sinneave Family Foundation
Alberta Government
Canada
The Canadian Association for Supported Employment (CASE)

Identify as neurodiverse, or as a person living with a disability?

Want to achieve your career goals?

Please reach out to Jibrán Hamayún our Employment Supports Program Facilitator to find out more information for our next session.

Email: employment@autismrmwb.org

Phone: 780-215-7280



FRIDAY FRIENDS

Social Skills and Friendship Group



THE PROGRAM

A 6 week facilitator led program, (based on PEERS) for youth aged 10-14yrs. Fridays 5-7pm, starting October 28th. Youth will learn and practice skills during sessions and practice at home with parents/family members. ATTENDANCE IS REQUIRED AT EACH SESSION. ELIGIBILITY IS DETERMINED THROUGH TELEPHONE INTERVIEW WITH FACILITATOR.

PROGRAM FOR THE EDUCATION AND ENRICHMENT OF RELATIONSHIP SKILLS (PEERS)

An evidence-based social skills training intervention for youth with ASD, ADHD, FASD, Anxiety, Depression and/or other socio-emotional challenges. PEERS is designed for motivated youth to learn how to make and keep friends. Skills taught include: use of appropriate conversational skills, appropriate use of humour, how to enter and exit conversation, how to handle arguments and disagreements, rumours and gossip, and how to handle rejection, teasing and bullying.

TO REGISTER, EMAIL
programdirector@autismrmwb.org

ASD:NVCI

Autism Spectrum Disorder: Nonviolent Crisis Intervention

March 2nd & 3rd 2023
at Unifor 707a



This course is intended for professionals, support workers and caregivers who support individuals with Autism Spectrum Disorder and/or other social communication disorders who would like to enhance their skills in a crisis.

- ✓ Learn to recognize behaviour levels
- ✓ Practice preventative strategies
- ✓ Learn verbal de-escalation techniques
- ✓ Assess levels of risk of harm
- ✓ Learn and practice disengagement skills

2-day Certificate Course
 ASRMWB Members: \$150
 Non-Members: \$200



Register at www.autismrmwb.org/whats-going-on/
 Email programdirector@autismrmwb.org or
 call 780-531-5777 for more details



Made with PosterMyWall.com

ADULT LIFE SKILLS PROGRAM


Our LifeSkills Program is open to any neurodiverse individuals and persons living with disabilities from the ages of 12-30 to learn critical life skills and to promote independent living.

For more information please contact:
Leslie Rae Samson LifeSkills
 Leader Email:
lifeskills@autismrmwb.org
 Phone: 587-452-9334

Independent Living Skills



Ages 18-29yrs

- ✓ Health & Self-Care
- ✓ Personal Finance
- ✓ Household Management
- ✓ Relationships
- ✓ Community & Leisure




An opportunity for neurodiverse young adults to learn critical life skills to promote independent living.

Apply:

MORE INFO:
lifeskills@autismrmwb.org



EDUCATION INCLUSION PROGRAM

We have been able to continue the delivery of this program through funding provided by the Community Initiative Grant from the Regional Municipality of Wood Buffalo.

Thank You

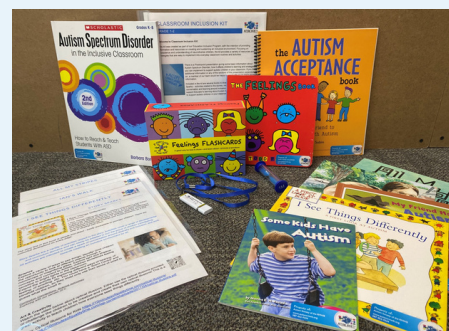
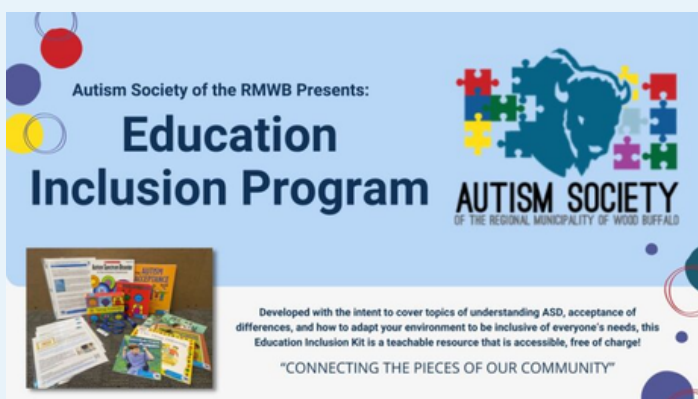


THE EDUCATION INCLUSION PROGRAM

The Education Inclusion Program, was created by the society as a lending resource that is accessible to and free of charge. It was developed with the intention of promoting and educating others about Autism Spectrum Disorder. With a focus on acceptance and understanding, it covers topics of understanding ASD, acceptance of differences, and how to adapt your environment to be inclusive of everyone's needs. Since its conception it has grown to a library of presentations that cover a range of topics for almost any organization, service provider, business, employer and family wishing to learn more about ASD acceptance and accommodations.

Our school lending bins have been created for an intended audience of early entry to grade 6. Educators can request to borrow a bin for their class. Included in the bin is a collection of books, interactive material and an informative slideshow. We

have ensured that the bins have curriculum related material that could be substituted for items in health or language arts. Reading comprehension activities, novel study material and critical thinking activities are just some of what you will find in this resource. We have also ensured to add Leader in Me language to slideshow content. It really is a "win, win". An extensive teacher recourse guide has been created for each bin and offers ideas for activities and group projects. A teacher could use as little or as much of this program as they like. The resource can be borrowed from the society office with training provided if required or requested. A presentation to the intended audience is available by our Community Development Officer as well.



Please follow the link below to request a kit:
[Education Inclusion Kit Request \(office.com\)](https://www.office.com)

NOW HIRING SOCIAL-RESPITE SUPPORT WORKERS



We are looking for motivated, caring, enthusiastic, supportive and professional members to join our team. Knowledge and previous experience supporting individuals with disabilities is essential.

**Flexible hours
part time/casual**

Email Resume to:

programdirector@autismrmwb.org

CONTACT US



Lower level of the Local 707A UNIFOR Building
21B-10019 MacDonald Ave,
Fort McMurray, AB
T9H 1S9



Phone: 587-452-9334



Email: community@autismrmwb.org



Website: www.autismrmwb.org

Vision

A Region where Autistic Individuals and all those living with a disability, are valued and are participating members of the community. A region that recognizes that all citizens have the right to live, work and play.

Mission

We are committed to creating an inclusive community through programming, supports, and understanding for Autistic individuals in our region, and all those living with a disability and their families across the lifespan.